

MAAS

▶ GROUP HOLDINGS

CAPABILITY STATEMENT



ABOUT US

Today MAAS Group Holdings is a leading independent Australian construction materials, equipment and services provider with diversified exposures across the civil, infrastructure, mining and real estate end markets.

Established with one bobcat and a tipper truck in 2002 by Wes Maas, MAAS Group Holdings has been built on reputation and today encompasses expanding construction materials, property, civil infrastructure and underground mining and tunnelling divisions.

With a proven track record and dedication to sustainability, MAAS Group Holdings is committed to the environment, and safety is first and foremost on its agenda prior to commencing any project.

With a diverse and experienced team of over 850 employees, operating from 16 strategic locations throughout Australasia, we support the operation of a fleet of over 1100 machines.

We pride ourselves on ensuring that the highest standards of delivery are met for our clients on time, every time.



ABOUT US



26 QUARRIES



6 CONCRETE PLANTS



3 MANUFACTURING FACILITIES



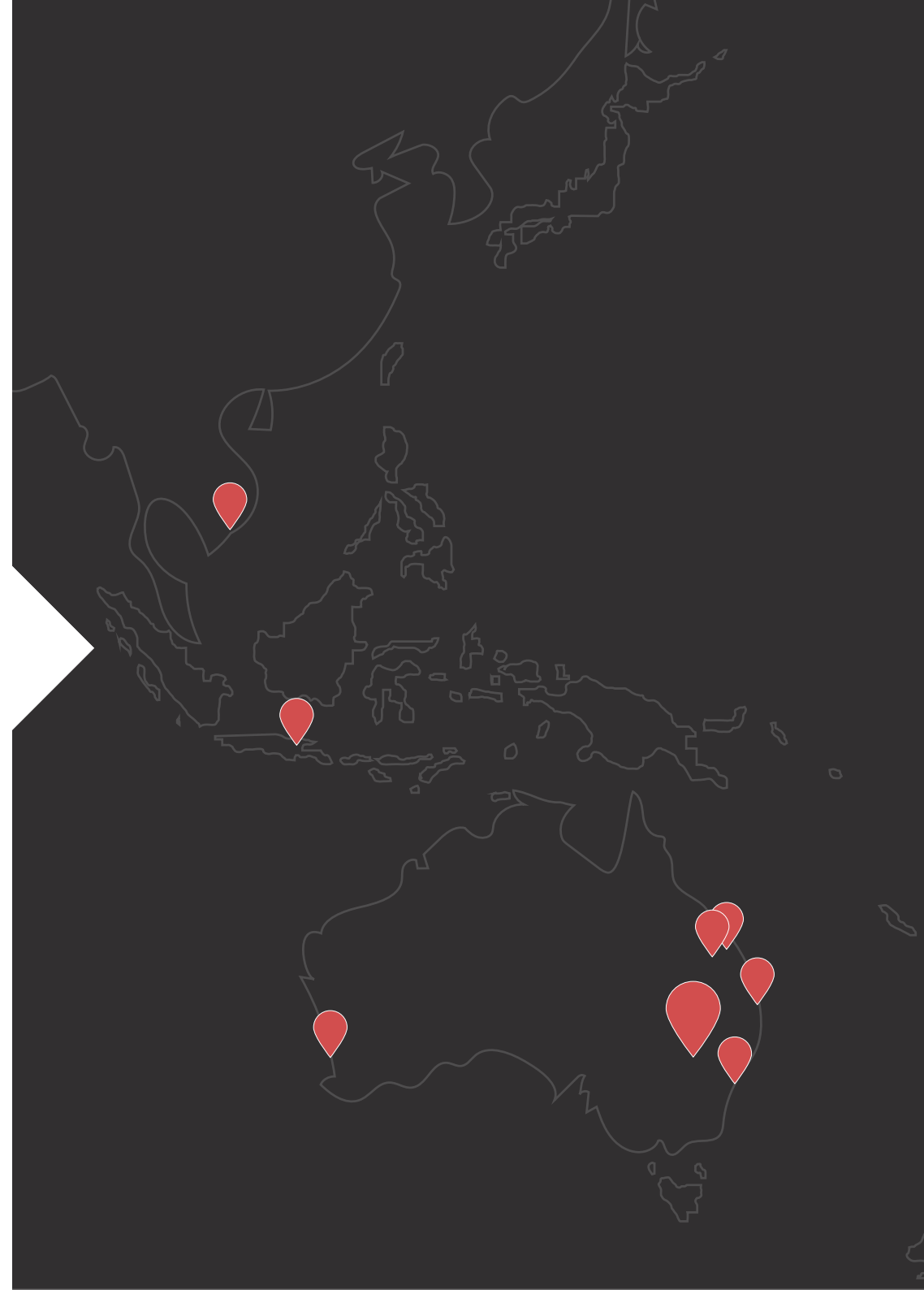
1100+ ASSETS FOR HIRE



16 LOCATIONS AUSTRALIA WIDE



850+ STAFF



MAAS GROUP COMPANIES

Founded in 2002, MAAS Group is a leading independent Australian construction materials, equipment and services provider with diversified exposures across the civil, infrastructure and mining.

MAAS Group holds a strong market position in all its key operating segments – Construction Materials, Civil Construction and Hire, and Manufacturing and Sales.



CONSTRUCTION MATERIALS

Comprising 20 strategically located quarries targeting major infrastructure projects and high growth areas, serviced internally by one of the largest mobile crushing and screening operations in NSW as well as bulk haulage and mobile concrete.



ELECTRICAL, MINING & TUNNELLING

JLE Groups dedicated electrical division specialises in electrical services and supplies for underground mining, tunnelling, civil construction and rail industries across Australia.



CIVIL, CONSTRUCTION & HIRE

Providing construction and above ground plant hire services to major civil and infrastructure projects in Australia, electrical infrastructure works to projects in NSW and electrical equipment and works to tunnelling and mining sector projects in Australia.



MANUFACTURING & SALES

Specialising in the supply of mobile equipment to underground tunnelling and mining sector projects in Australia, as well as large scale equipment engineering and manufacturing to underground tunnelling and mining projects globally.

An aerial photograph of a large-scale quarry and aggregate processing facility. The site is characterized by extensive excavated earth, several large circular and rectangular storage piles of sand and gravel, and a network of dirt roads. In the center, there are industrial buildings and processing equipment. The facility is surrounded by a mix of green trees and open, dry land. In the far background, a range of low mountains is visible under a clear sky. A white triangular graphic element is positioned on the left side of the image, partially overlapping the text.

**THE HIGHEST STANDARDS OF DELIVERY ARE MET ON TIME,
EVERY TIME.**

OUR TEAM



WES MAAS
MANAGING DIRECTOR & CEO
MAAS GROUP HOLDINGS

Wes was 22 when he launched the business which started out with one Bobcat and a tipper truck.

A little over 15 years later, he has grown the business to incorporate a highly successful plant hire operation of 300+ equipment, bulk earthworks, civil construction, quarry business and also a crushing and screening contract hire, along with a residential and commercial property division.

Wes is now supported by a team of dedicated staff with the same vision and a very strong culture, all who endeavour to continue to grow the business.



DAMIEN PORTER
DIRECTOR BUSINESS DEVELOPMENT
MAAS GROUP HOLDINGS

With over 20 years of experience in Quarry, Civil and Mining Operations, Damien brings a comprehensive knowledge of industry.

Damien has been with MAAS since inception and oversees upwards of 100 employees and 400 items of machinery at any given time.



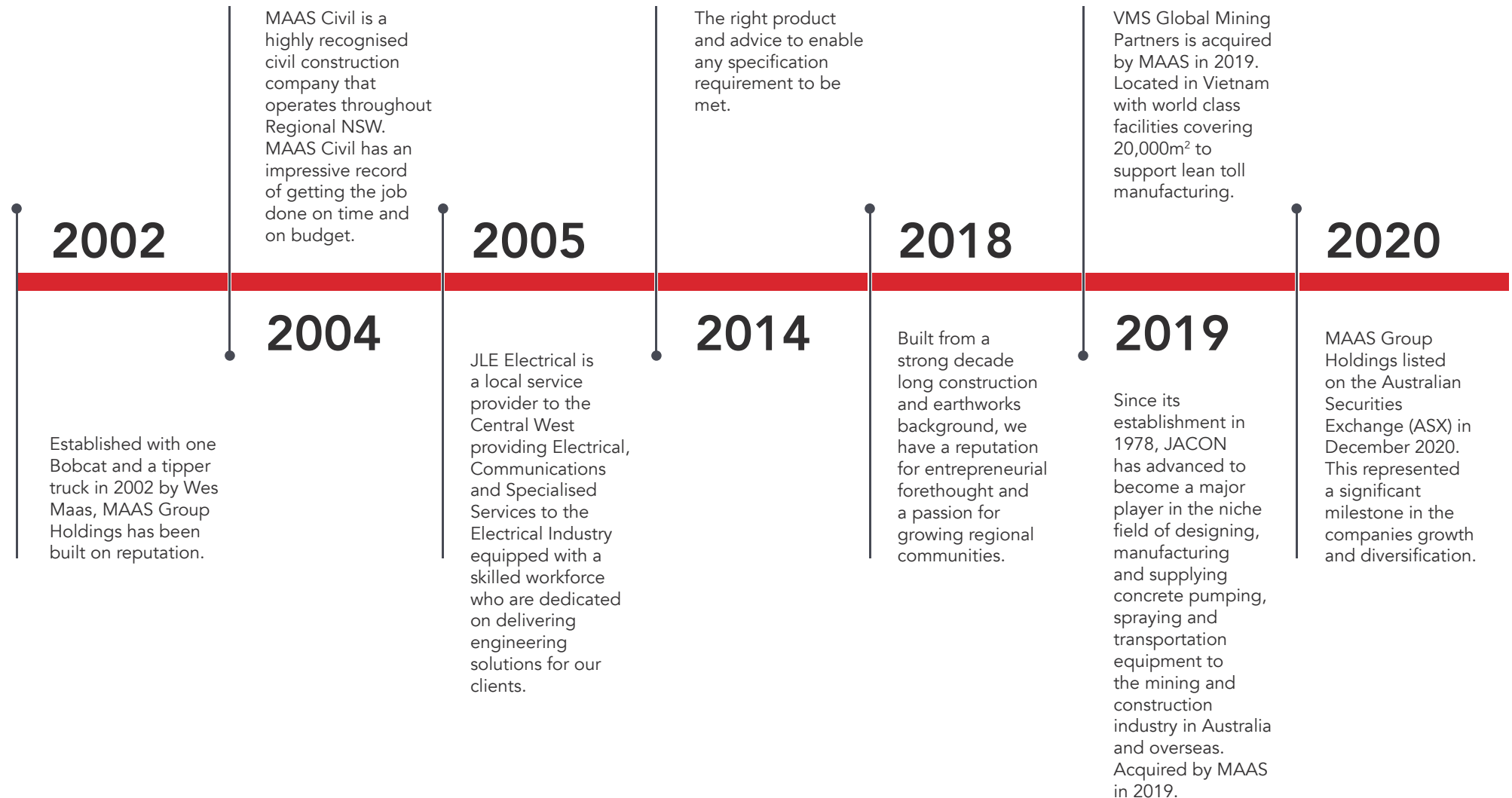
JOSH LARGE
DIRECTOR CIVIL & CONSTRUCTION HIRE
MAAS GROUP HOLDINGS

Josh founded JLE in 2004. Since this time, he has grown the business considerably and is driven to continue the growth of engineering, underground and overhead powerline construction and industrial process control and manufacturing.

Josh ensures that JLE Electrical always delivers on every commitment.

In 2021 Josh was appointed the Director of the Civil & Construction Hire division of MAAS Group Holdings, where he is responsible for operational excellence and continuous improvement throughout all business units with the CCH.

TIMELINE



JACON

EQUIPMENT ▶



JACON

JACON was founded in 1978 and throughout this time has grown to become well recognised within the construction and mining industry as a designer, manufacturer, and supplier of purpose-built concrete pumping, spraying, and transportation equipment.

In 2019, JACON was acquired by MAAS Group, enhancing its footprint and support services, allowing JACON Equipment to provide a world class product, with world class service.

With more than 40 years' experience working with clients across mining, tunnelling and civil construction industries, JACON remains dedicated to customer satisfaction in embracing cost-effective solutions that add significant value to our customer operations whilst ensuring safe and productive environment.

PRODUCT & SERVICE CAPABILITIES

- ▶ Shotcrete Equipment
- ▶ Concrete Transmixers
- ▶ Utility Equipment
- ▶ Explosives Charging Equipment
- ▶ Concrete Pumping Equipment
- ▶ Worldwide dealer support network



**JACON HAS SOLD OVER 1500 UNITS OF CIVIL EQUIPMENT AND
OVER 500 UNITS FOR MINING AND TUNNELLING OPERATIONS**



OUR TEAM



MICHAEL RUTTEN
PRODUCT MANAGER
JACON EQUIPMENT

Michael has been working with Jacon Equipment for over 13 years, working in various areas and roles within the business during this time.

Growing into the family business and being the third generation to work for Jacon, he is passionate about the brand and working with clients to meet their needs. He has travelled around the world representing the brand and been involved in delivering 100's of machines to projects globally.

As product manager, Michael oversees the international sales, research & development, engineering, and product support segments of the Jacon business.



GLENN BLUNT
**GENERAL MANAGER MANUFACTURING
& GLOBAL SUPPLY CHAIN**
MAAS GROUP HOLDINGS

Glenn joined the MAAS group in 2019 and has 21 years management experience within original equipment manufacturer (OEM) and mining contractor organisations.

He worked in international roles and managed a geographical spread of operations.

He is supported by dual trade fitter & turner and automotive plant, diploma of frontline management and graduate certificate managing finance.

Business growth, continuous improvement and coaching teams are his passions.



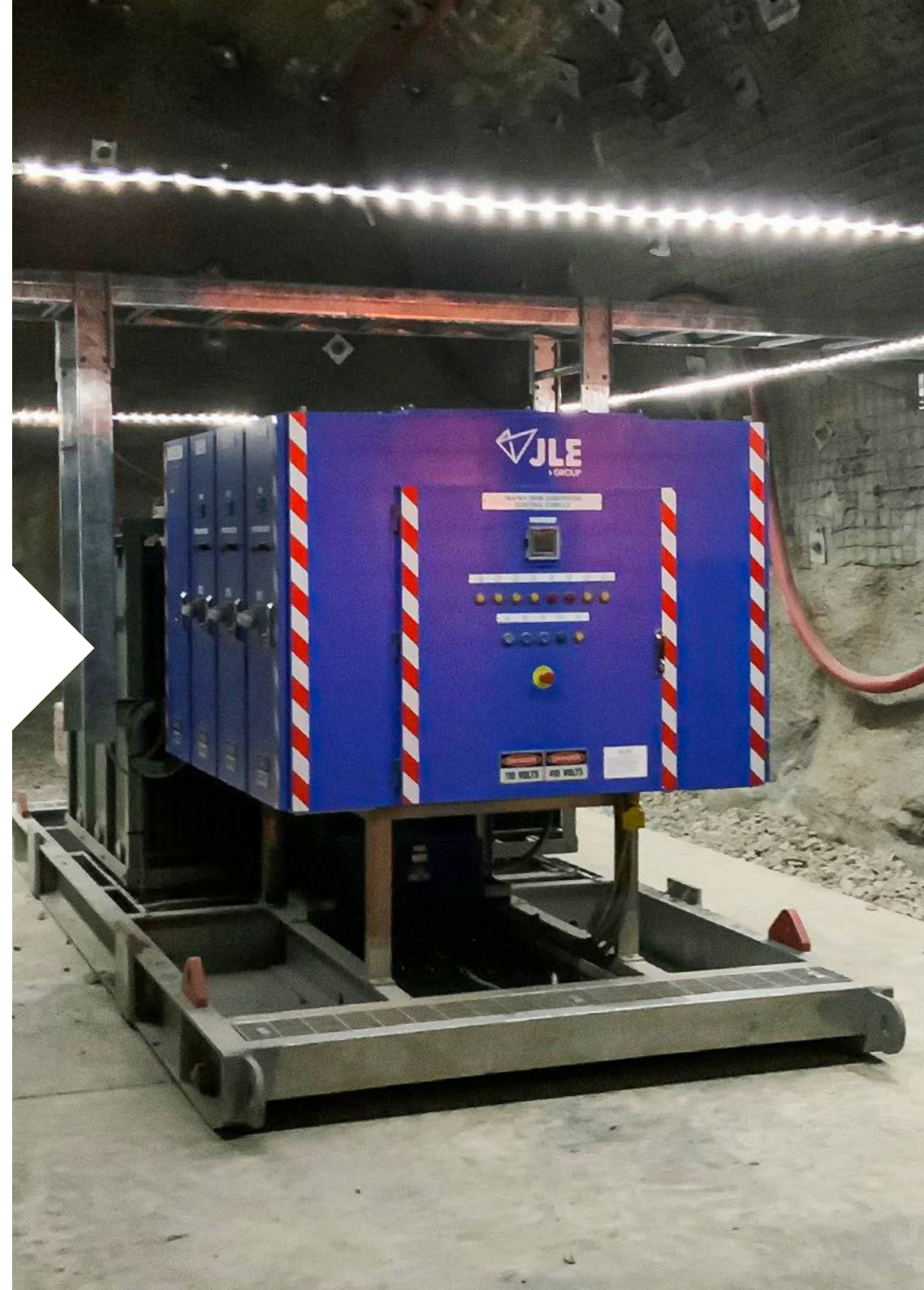
MINING + TUNNELLING

JLE mining + tunnelling offer a complete range of specialised solutions for your needs.

JLE Group's dedicated electrical mining and tunnelling division specialises in electrical services and supplies for underground mining and tunneling projects across Australia. Our highly skilled and efficient team offer expertise and electrical solutions that reduce costs, minimise downtime, and increase productivity.

OUR SERVICES

- HV temporary power
- One of Australia's largest Mining and Tunnelling electrical hire fleets featuring modern and sophisticated 1000V and 415V substations, gate end boxes and distribution boards.
- We manufacture a range of 1,000V start boards, distribution boards and gate end boxes for hard rock mining and tunnelling industries.
- We manufacture and design a wide variety of AS2081/AS61439 compliant electrical switchboards and substations, 1000V and 415V starter boards and distribution boards. We also provide full support including spare parts, installation and service.
- Electrical products for sale or hire including drafting, detailed design and engineering, protection studies, electrical engineering and design, management plans, auditing and compliance all compliant with the highest regulatory requirements.
- Sale and hire of all types trailing/rubber cable. From 35 – 150mm 241.1 1000V cable to 11kV TBM cabling.
- Extensive high voltage services including maintenance, installation and testing
- Network connections
- Installations and HV termination starters
- Lighting boxes
- Custom built substations, switch-rooms, distributions boards designed and engineered to your specific needs



OUR TEAM



AARON DAVIES
GENERAL MANAGER VIC, SA & WA
JLE GROUP

Aaron is an experienced operational and projects manager with a demonstrated history of working in the mining, tunnelling, electrical & metals industry.

Skilled in reliability engineering, safety management systems, training delivery, production management and continuous improvement.

Aaron is a strong operations professional who has completed the Mining Leaders Program focused in Business Administration and General Management, from The University of Queensland.



PETER JOHNSON
MANUFACTURING & HIRE MANAGER
JLE GROUP

With almost a decade of experience across the electrical industry, Peter brings a wealth of knowledge to JLE Group.

Specialising in project management from design to handover and high voltage installations and shutdowns, Peter's experience in mining and underground projects is vast.



DAMIEN ROOTES
OPERATIONS MANAGER
JLE GROUP

Damien commenced his career with JLE Group as an apprentice. His role has grown from tradesman, trade supervisor, electrical project manager, to his most recent position, electrical manager.

Damien provides a high level of support to our senior and junior project managers and ensures that our electrical team has the required resources and support needed to deliver a successful project.

Damien's experience in the industry and his ability to understand the importance of efficient outcomes for all, assures that we create value for our clients.



PETER STIMPSON
ESTIMATOR | ASSET MANAGEMENT
JLE GROUP

Peter is an adaptable, solution focused electrical professional with decades of experience across the infrastructure, civil and tunnelling sectors.

Peter is a skilled electrical cost analysis and project manager with first rate communication and negotiation skills.

MAAS

▶ PLANT HIRE



MAAS PLANT HIRE

MAAS Plant Hire are suppliers of quality plant and equipment to many of the major infrastructure projects throughout Australia.

With a well-maintained top-quality fleet in excess of 300+ items, we have proudly supplied equipment to most of the majors in Australia including Seymour Whyte, Lend Lease, CPB Contractors, McMahon, BMD, Golding Contractors, John Holland and Fulton Hogan.

With a reputation for being able to deliver the right product and advice to enable any equipment requirement is met, our experienced team is at the forefront of the industry.

OUR FLEET

- ▶ Articulated & Rigid Dump Trucks
- ▶ Excavators
- ▶ Bulldozers
- ▶ Graders
- ▶ Compactors
- ▶ Loaders
- ▶ Articulated & Rigid Water Carts
- ▶ Underground Loaders
- ▶ Underground Trucks
- ▶ Shotcrete Equipment
- ▶ Concrete Agitators
- ▶ Production and Development Drills
- ▶ Integrated Tool Carriers



OUR TEAM



PHIL KLEIN
GENERAL MANAGER
MAAS PLANT HIRE

Phil brings over 20 years of sales and operations management experience including a significant period working with one of Australia's largest equipment rental companies.

Having studied business management (CSU) & holding a variety of roles including branch management, regional management, business development, national and international sales management has enabled Phil to develop a broad range of skills.

Phil is responsible for the MAAS Plant Hire business and has a strong focus on building lasting relationships and partnering with our clients.



JASON FINLAY
GROUP ASSET MANAGER
MAAS GROUP HOLDINGS

Jason is the Group Asset Manager and brings over 30 years experience in heavy vehicle parts and service repairs to the company.

Jason took on the role of Asset Manager at a regional truck parts and repair company in 2002.

As Asset Manager, Jason was responsible for significant growth of the business group taking on the Mack and Volvo dealerships as well as opening branches in Sydney, Dubbo, and the North American purchasing arm.

Jason has gained his Certificate IV in Frontline Management.



MATT LLOYD
BUSINESS DEVELOPMENT SALES MANAGER
MAAS PLANT HIRE

Bringing over 20 years experience in sales, fleet management and equipment hire, Matt brings a well-rounded knowledge base to the MAAS Group.

Matt is responsible for the MAAS National Mining & Tunnelling Hire fleet. With a plan for steady growth and an emphasis on quality.

Having worked within a large Caterpillar dealer has given Matt the skills required to set systems and processes for client transparency during hire contracts.

Currently studying an MBA which will add the skill set required to lead from the front.

REGIONAL

► QUARRIES



REGIONAL QUARRIES AUSTRALIA

Regional Quarries Australia is the preferred supplier of product to NSW government departments and agencies such as Roads and Maritime Services, Councils, ARTC Contractors and Builders.

Teaming alongside various companies and government departments, we continue to deliver a high standard of product to civil and infrastructure construction projects across the state. With a fleet of 46 company owned PBS rated Truck & Dogs, our team can guarantee large volumes delivered to site as required. With long-life quarries strategically located in regional NSW growth markets, our product is easily accessible and reliable to a wide market.

With a reputation for being able to deliver the right product and advice to enable any specification requirement is met, our experienced team is at the forefront of the industry, and our products include aggregates, crushed rock and road base, fill material, sand and specialty rock.

OUR PRODUCTS

- ▶ Manufactured Sand
- ▶ Aggregates 5mm – 20mm
- ▶ Concrete Mix
- ▶ Roadbase: DGS 20, DGB 20,
- ▶ DGB20/HD, DGB 40
- ▶ Select 100mm
- ▶ Drainage Rock
- ▶ Rail Ballast
- ▶ Non Spec Road Base – 20mm & 40mm
- ▶ Select Fill
- ▶ Ridge Gravel
- ▶ Gabion Rock – 120mm+
- ▶ High PI Road Base – 20mm






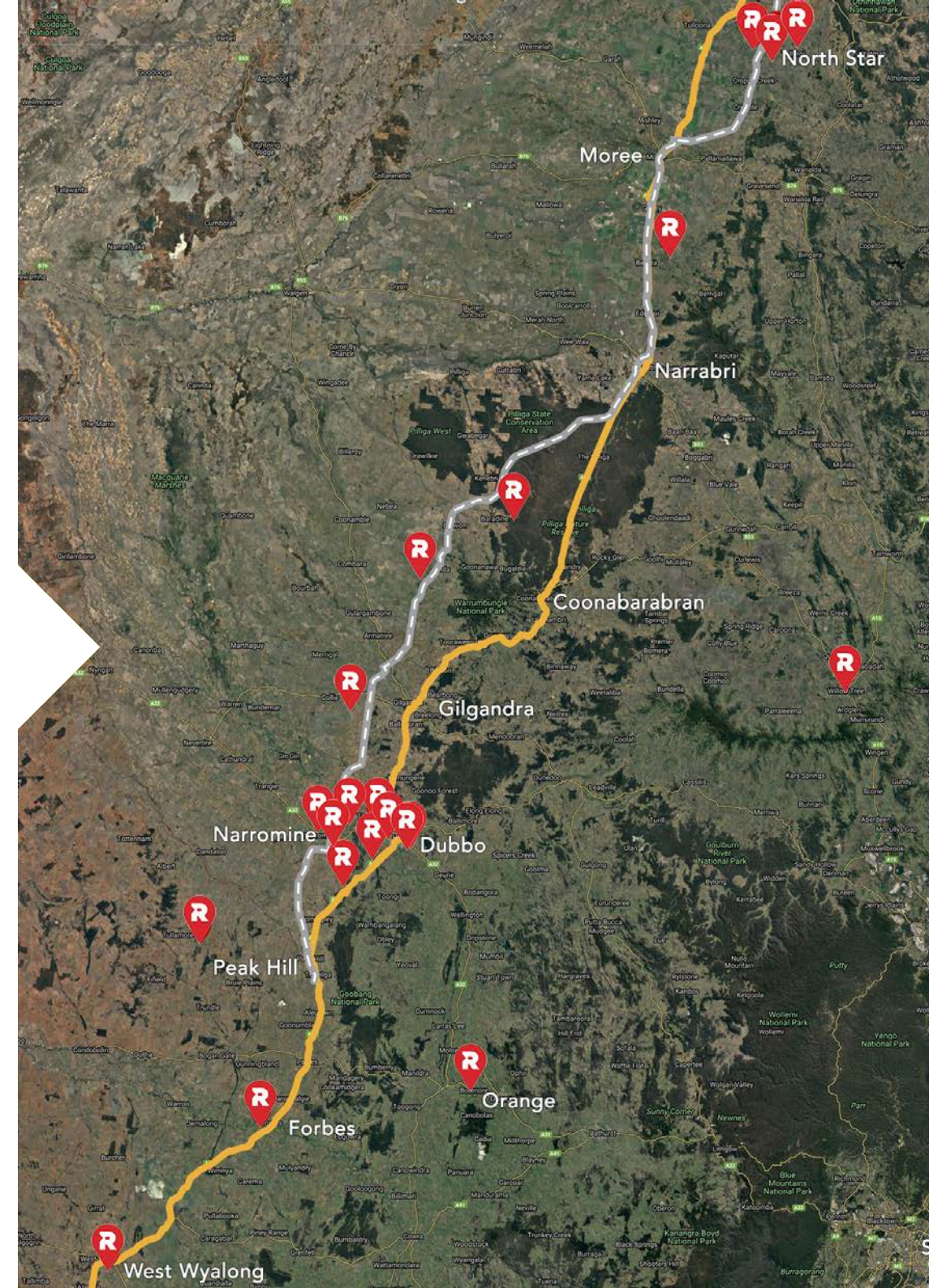
REGIONAL QUARRIES AUSTRALIA

OUR QUARRIES - NSW

- NORTHSTAR QUARRY
- TIKITERE QUARRY
- PEARLMAN QUARRY
- BELLATTA QUARRY
- TABLE TOP MOUNTAIN QUARRY
- MOUNT TENANDRA QUARRY
- BERAKEE QUARRY, GILGANDRA
- DUBBO SANDS
- MACQUARIE MANOR QUARRY, NARROMINE
- EUMUNGERIE ROAD QUARRY, NARROMINE
- DAPPO ROAD QUARRY, NARROMINE
- SOUTH KESWICK
- MEWBURNS MAAS
- MEWBURNS OLD RMS
- COOKS PIT
- TULLAMORE QUARRY
- BALD HILL QUARRY, ORANGE
- FORBES QUARRY
- WEST WYALONG QUARRY
- BARADINE
- WILLOW TREE QUARRY

MAP KEY

-  RGA QUARRY
-  RAILWAY
-  NEWELL HIGHWAY

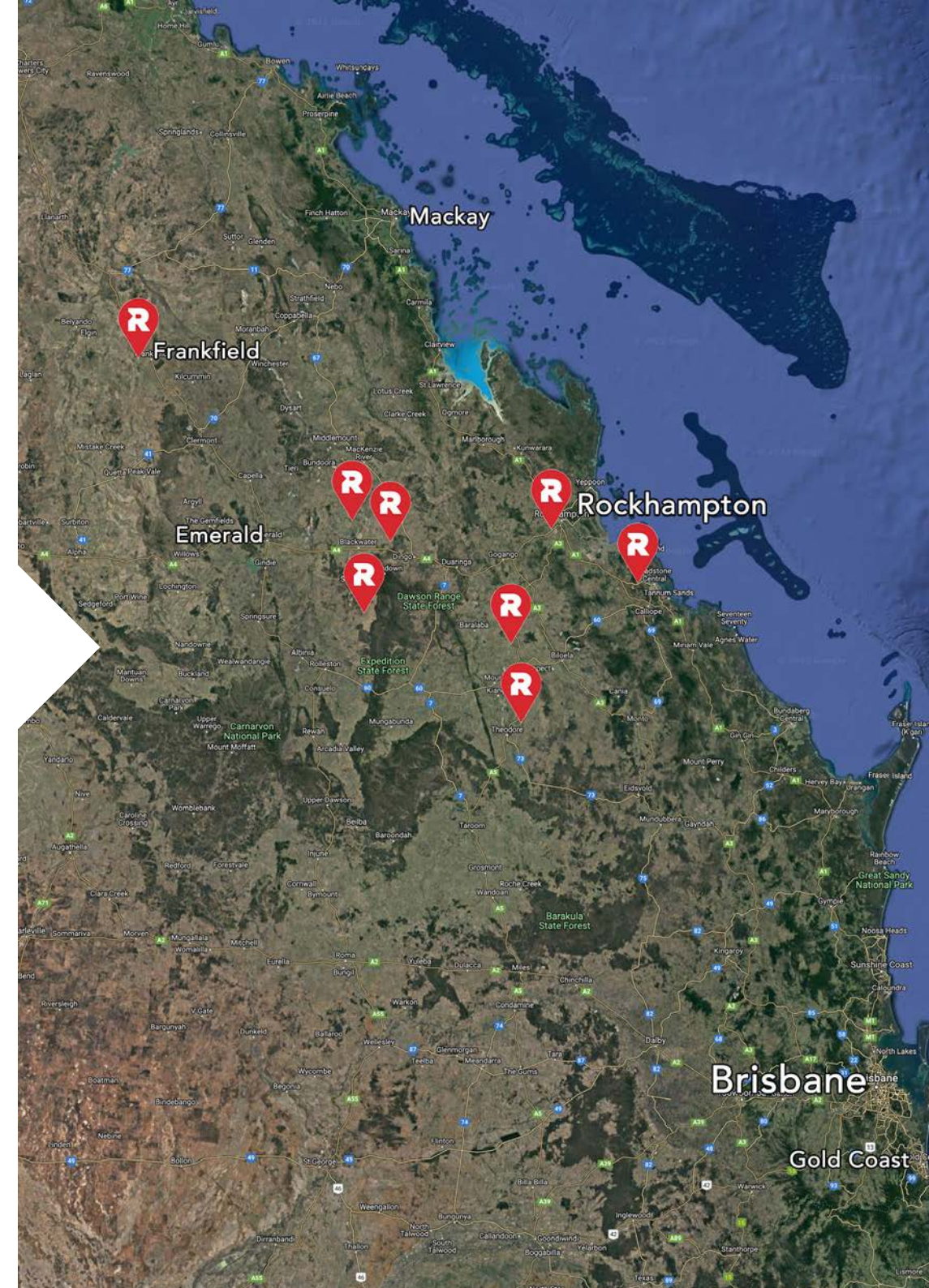


REGIONAL QUARRIES AUSTRALIA

OUR QUARRIES - QLD

- ▶ AMCOR QUARRY, STANWELL
- ▶ FRANKFIELD QUARRY
- ▶ BLACK HILL QUARRY
- ▶ RED ROCK QUARRY
- ▶ FAIRVIEW QUARRY
- ▶ CASTLE CREEK QUARRY
- ▶ EARTH COMMODITIES
- ▶ BEDFORD WEIR QUARRY

MAP KEY



The image is a promotional graphic for Regional Group's crushing and screening equipment. It features a large red 'X' shape that divides the background into four quadrants. The top-left quadrant shows a large pile of dark grey crushed material. The top-right quadrant shows a yellow conveyor belt system with a 'REGIONAL GROUP' logo. The bottom-left quadrant shows a large pile of reddish-brown material. The bottom-right quadrant shows a green conveyor belt system with a 'McHale' logo. The text 'REGIONAL' is in large white letters, and 'CRUSHING & SCREENING' is in smaller white letters below it, with a small white triangle pointing to the right.

REGIONAL

▶ CRUSHING & SCREENING

REGIONAL CRUSHING AND SCREENING

Regional Crushing and Screening is a major force in the mobile crushing and screening market, working for a number of council shires, mines and major contractors.

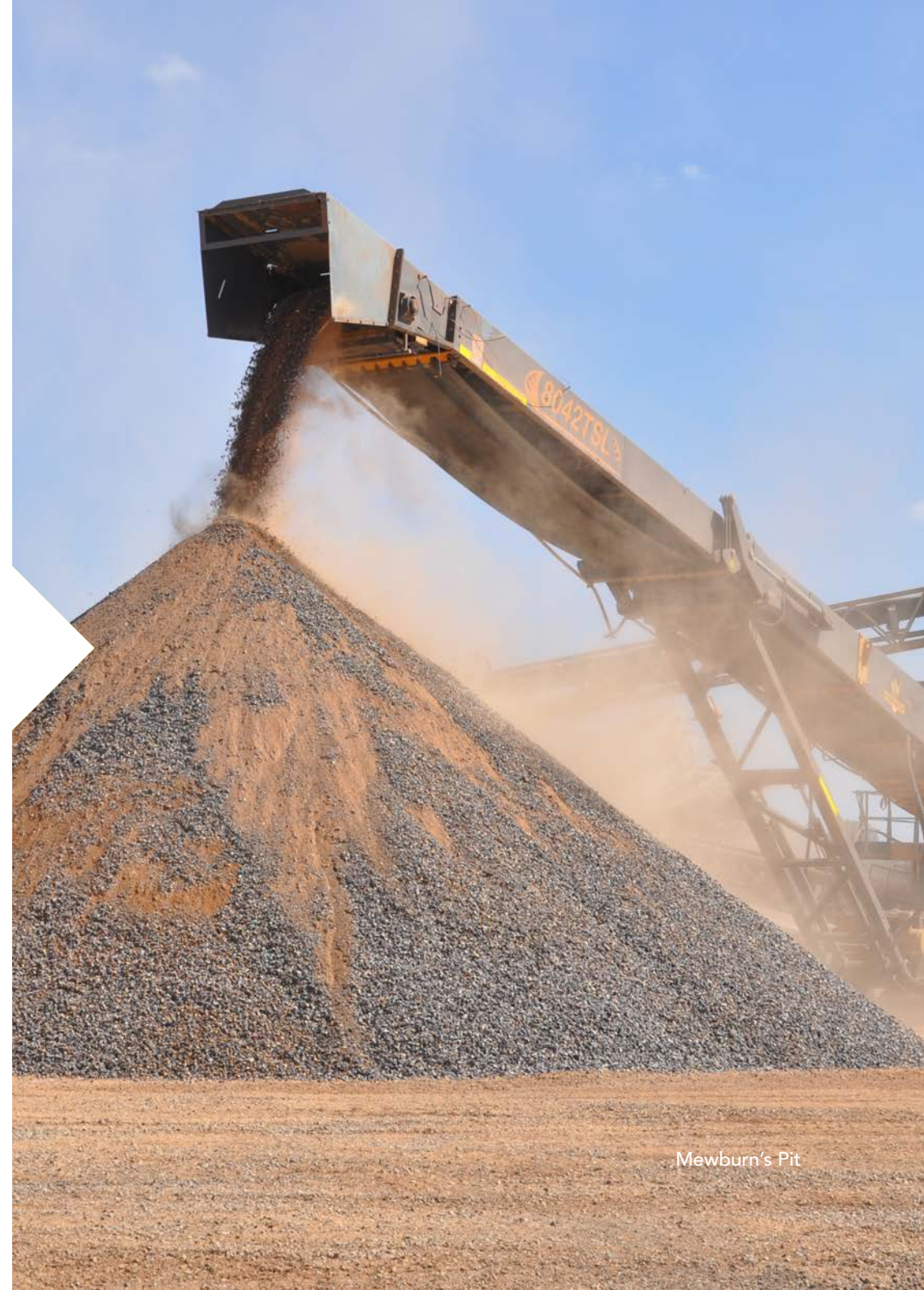
One of the largest operations in NSW, we boast a diverse fleet and highly skilled workforce, offering high quality quarry products to our customers efficiently, to meet short lead times.

With a proven track record and reputation to produce and deliver the right product, whether it be from our fixed plant or extensive range of mobile crushing equipment, our fleet and workforce have the capability to work in hard rock quarries, coal mines and civil projects.

Our extensive range of mobile fleet includes Jaw Crushers, Closed Circuit Electric Mobile Crushing Unit, Closed Circuit Cone Crushers, Cone Crushers, Closed Circuit Impactors, Impactors, Screens, Tracked Stackers and Full Fleet of Complimentary Mobile Plant.

OUR PRODUCTS

- ▶ Fixed Crushing, Screening and Washing Plant
- ▶ Closed Circuit Electric Mobile Crushing Unit
- ▶ Closed Circuit Fixed Electric Plant
- ▶ Jaw, Cone, Impactor and Stacker Crushers
- ▶ Precision Pugmill
- ▶ Screening Plant



Mewburn's Pit

OUR TEAM



PETER HEWSON
GENERAL MANAGER
REGIONAL GROUP AU

Peter brings over 25 years' experience in the Mining Quarrying and Construction industry to MAAS Group. Having started his career as a dozer operator Peter is a very much a practical manager and has delivered a range of projects including tailings dams, above ground portals, raw material supply for international airport upgrades and national highways.

Passionate about operational improvement and constantly striving for improvement, Peter works hard with and for his customers to find a fit for purpose solution to overcome any obstacle.



RICHARD TOMKINS
BUSINESS DEVELOPMENT MANAGER
REGIONAL GROUP AU

Richard joined MAAS Group in August 2019 and brings with him a comprehensive knowledge of the construction material industry gained through a diverse 20 year career.

Having spent 15 years working for the largest construction materials multinational in Australia, Richard has held many senior management roles in both their concrete and quarry businesses.

Richard specialises in the delivery of large construction material projects, whilst optimising operational performance.



MAAS GROUP HEAD OFFICE
20L Sheraton Road, Dubbo NSW 2830
PO Box 4921, Dubbo NSW 2830

02 5852 1800
info@maasgroup.com.au
maasgroup.com.au